

Part 2

Invention on a theme by Handel

Ryan Folk

♩ = 135

First musical staff, measures 1-8. The key signature has one flat (B-flat) and the time signature is 3/4. The music begins with a quarter rest followed by eighth notes.

Second musical staff, measures 9-18. Measure 9 is marked with a '9'. This staff includes trills (tr) in measures 14 and 15.

Third musical staff, measures 19-27. Measure 19 is marked with a '20'. The music continues with eighth and sixteenth notes.

Fourth musical staff, measures 28-35. Measure 28 is marked with a '28'. The music features a mix of eighth and quarter notes.

Fifth musical staff, measures 36-42. Measure 36 is marked with a '36'. This staff contains trills (tr) in measures 38 and 39.

Sixth musical staff, measures 43-50. Measure 43 is marked with a '43'. The music includes a sharp sign (#) in measure 46.

Seventh musical staff, measures 51-59. Measure 51 is marked with a '51'. The music continues with eighth and quarter notes.

Eighth musical staff, measures 60-66. Measure 60 is marked with a '60'. The music features a flat sign (b) in measure 61.

Ninth musical staff, measures 67-72. Measure 67 is marked with a '67'. This staff includes flat signs (b) in measures 68, 70, and 71.

Tenth musical staff, measures 73-80. Measure 73 is marked with a '73'. This staff includes a trill (tr) in measure 74.

82



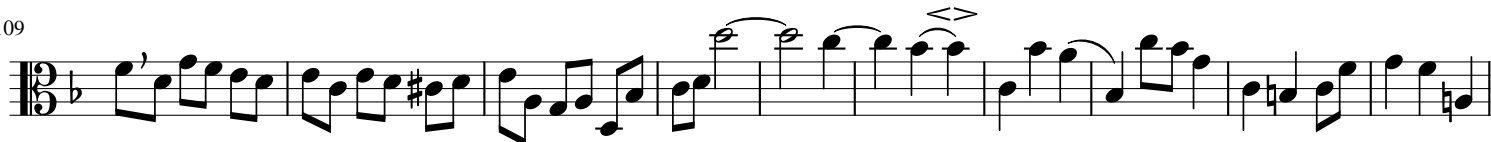
90



100



109



119



128



136

